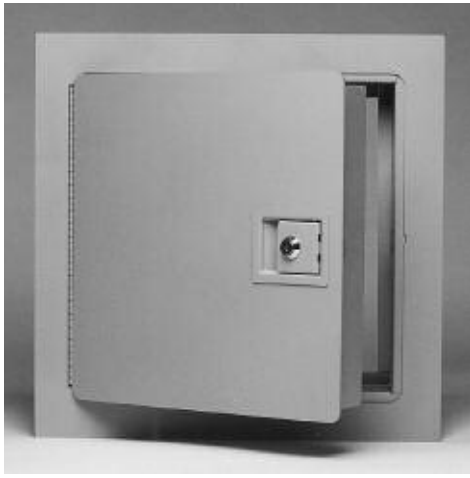


WB-FR Premium Ultra Fire-Rated Access Door



REPRESENTED BY

DETAIL & SUBMITTAL SHEET

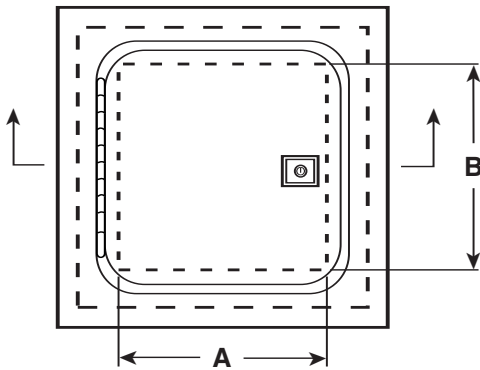
Project:

Specification Reference:

Contractor:

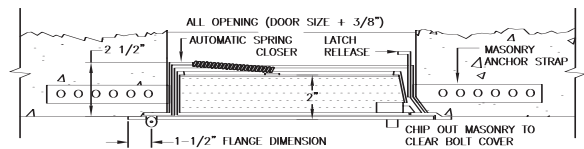
Architect:

Date:

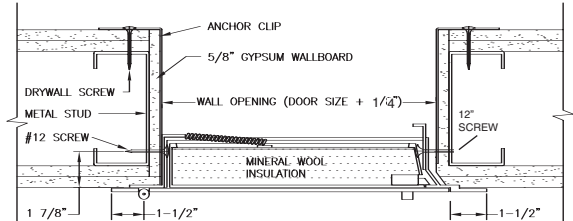


ELEVATION

masonry wall



gypsum wall



SECTION DETAIL

Underwriters Laboratories: Northbrook, IL 1-1/2 hr. "B" Label, 250 degree F maximum temperature rise in 30 minutes, for vertical installations, File #R10364(N).

Warnock Hersey International: Pittsburgh, CA 1-1/2 hr. rating for vertical wall assembly, Issue #7165. California State Fire Marshall, Approval #3325-1246:103. This door may be used in 2 hr. fire-rated wall assembly.



CONSTRUCTION FEATURES:

Door and Trim: 14 ga. steel. Inside of door has rolled safety edges for operator protection.

Return Frame: 16 ga. steel.

Insulation: 1-7/8" thick mineral wool, sandwiched between two pieces of 22 ga. steel.

Hinge: Continuous piano hinge allows opening to 180°, and shall be placed on long side of door unless otherwise requested.

Latches: Self-latching keyed cylinder paddle latch (151 key code), opposite hinge.

Automatic Panel Closer: Furnished on all doors.

Inside Panel Release: Furnished on all doors.

Finish: Electrostatically applied baked grey enamel coat, over rust-inhibiting phosphate treated steel. This coating can be used as a finish or as a prime coating.

Optional Finishes: (AT EXTRA COST)

- Stainless Steel Type 304 or 316
- Galvanized/Zinc Coating

Option: (AT EXTRA COST)

- Pemko Hot Smoke Seal Gasketing

Door Size	Wall Opening	Hinges	Slam Catch	Shipping Wt. Lbs. Steel/Stainless
8"x8"	8 1/4"x8 1/4"	1	1	7
12"x12"	12 1/4"x12 1/4"	1	1	17*
12"x18"	12 1/4"x18 1/4"	1	1	21
16"x16"	16 1/4"x16 1/4"	1	1	24*
18"x18"	18 1/4"x18 1/4"	1	1	28*
18"x24"	18 1/4"x24 1/4"	1	1	36
24"x24"	24 1/4"x24 1/4"	1	1	41*
24"x30"	24 1/4"x30 1/4"	1	2	58
24"x36"	24 1/4"x36 1/4"	1	2	65
24"x48"	24 1/4"x48 1/4"	1	2	80
32"x32"	32 1/4"x32 1/4"	1	2	73
36"x36"	36 1/4"x36 1/4"	1	2	93
36"x48"	36 1/4"x48 1/4"	1	2	123
48"x48"	48 1/4"x48 1/4"	1	2	146

* Standard in Stainless Steel



THE WILLIAMS BROTHERS CORPORATION

Corporate Office:
777 Tapscott Rd.
Scarborough, Ontario
M1X 1A2

Phone: (416) 299-7767
Fax: (416) 299-8039
Toll free tel.: 1-888-575-1132
Toll free fax: 1-888-575-1134

www.williams-brothers.com
sales@williams-brothers.com