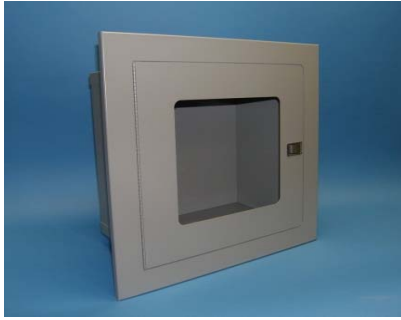


Durable, attractive & precision built - Williams Brothers **ELITE** cabinets are an ideal choice for virtually any architectural specification. A wide variety of standard & custom sizes, as well as finishes, make this cabinet the industry standard.



SPECIFY:

1. Finish:

GR - Primer Grey **WH** - White **RD** - Red
SS - 304 Stainless Steel #4 Satin Finish **MR** - Mirror Polished (Select Sizes only)
(316 Stainless Steel Option Available)

2. Turnback:

FT - Flat Trim **R** - Recessed **SR** - Semi-Recessed **RT** - Rounded Trim

3. Door Style:

FG - Full Glass **FM** - Full Metal **BG** - Standard Break Glass
SBG - Square Break Glass **VD** - Vertical Duo **HD** - Horizontal Duo

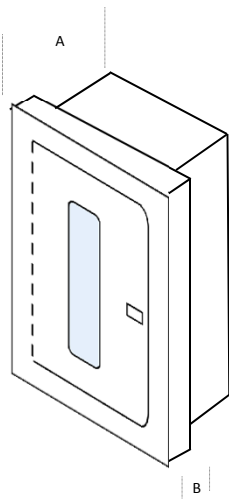
4. Hinges:

PH - Full Length Piano Hinge **IH** - Invisible SOSS Hinges (Standard on SS Cabinets)

5. Latch:

PL - Paddle Latch **CYL** - Cylinder Lock **BGL** - Break Glass Lock Assembly
PU - 4" Chrome Pull Handle **ADA** - 4" Recessed Black Pull Handle

OPTIONAL 2 HR. FIRE RATING AVAILABLE- Add prefix **FR** after the model No.
e.g. **2-0211-FR**



Important!
A - B = Min. Wall depth required

FIRE RATED OPTION:



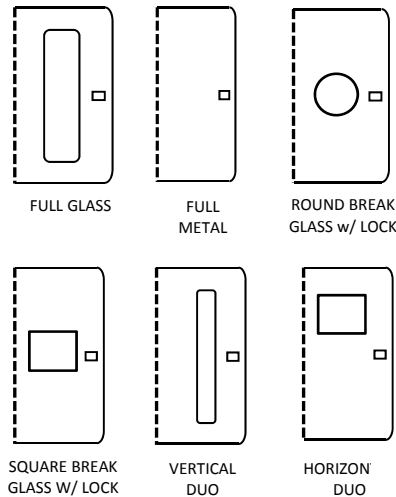
2 hr. Fire Rated Cabinet Assembly, with a layer of UL Classified Type X gypsum and an additional 22 ga. galvanized tub, maintains the fire rating of the wall when installed according to WB Corp. instructions.

Eliminates the need to line the rough opening and provides peace of mind to the AHJ with the WH Label.

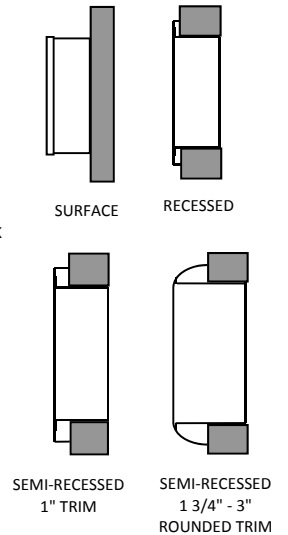
See Installation Instructions for further information.



Door Styles:



Trim Options:



Fire Hose, Extinguisher & Valve Capacity	Model		Style	Tub I.D. (A) w x h x d	FR Tub O.D.		Trim O.D. w x h	Trim Turnback (B)	Stainless Steel Trim Turnback
	Steel	Stainless Steel			w x h x d	w x h x d			
75ft. Hose, 1 1/2" & 2 1/2" Valves	3-2211	2-2225	Recessed	20" x 30" x 8"	21 1/2" x 31 1/2" x 8 3/4"	24" x 34"	1/2"	3/4"	
	2-2111	2-2125	Surface	20" x 30" x 8"	-	-	-	-	
75ft. Hose, 5lb FX, 2 x 1 1/2" Valves	2-3211	2-3225	Recessed	22" x 30" x 6"	23 1/2" x 31 1/2" x 6 3/4"	26" x 34"	1/2"	3/4"	
	2-3111	2-3125	Surface	22" x 30" x 6"	-	-	-	-	
100ft. Hose, 10lb FX, 2 x 1 1/2" Valves	2-0211	2-0225	Recessed	30" x 30" x 6"	31 1/2" x 31 1/2" x 6 3/4"	34" x 34"	1/2"	3/4"	
	2-0111	2-0125	Surface	30" x 30" x 6"	-	-	-	-	
100ft. Hose, 10lb FX, 1 1/2" & 2 1/2" Valve	2-4211	2-4225	Recessed	30" x 30" x 8"	31 1/2" x 31 1/2" x 8 3/4"	34" x 34"	1/2"	3/4"	
	2-4111	1-4125	Surface	30" x 30" x 8"	-	-	-	-	